

The Drawing Reflects a VMATA
 Project. All drawings
 developed by the Contractor
 which reflect this Design Philosophy

WASHINGTON METROPOLITAN AREA TRANSIT AUTHORITY
 DEPARTMENT OF TRANSIT SYSTEM DEVELOPMENT
 OFFICE OF SYSTEMS

APPROVED: *[Signature]* May 3, 2001
 DIRECTOR

DATE

REVISIONS

DATE	BY	DESCRIPTION
08/2001	STP	Revised and Issued by the Authority

REFERENCE DRAWINGS

NUMBER	DATE	DESCRIPTION

DESIGNED: DATE:

DRAWN: DATE:

CHECKED: DATE:

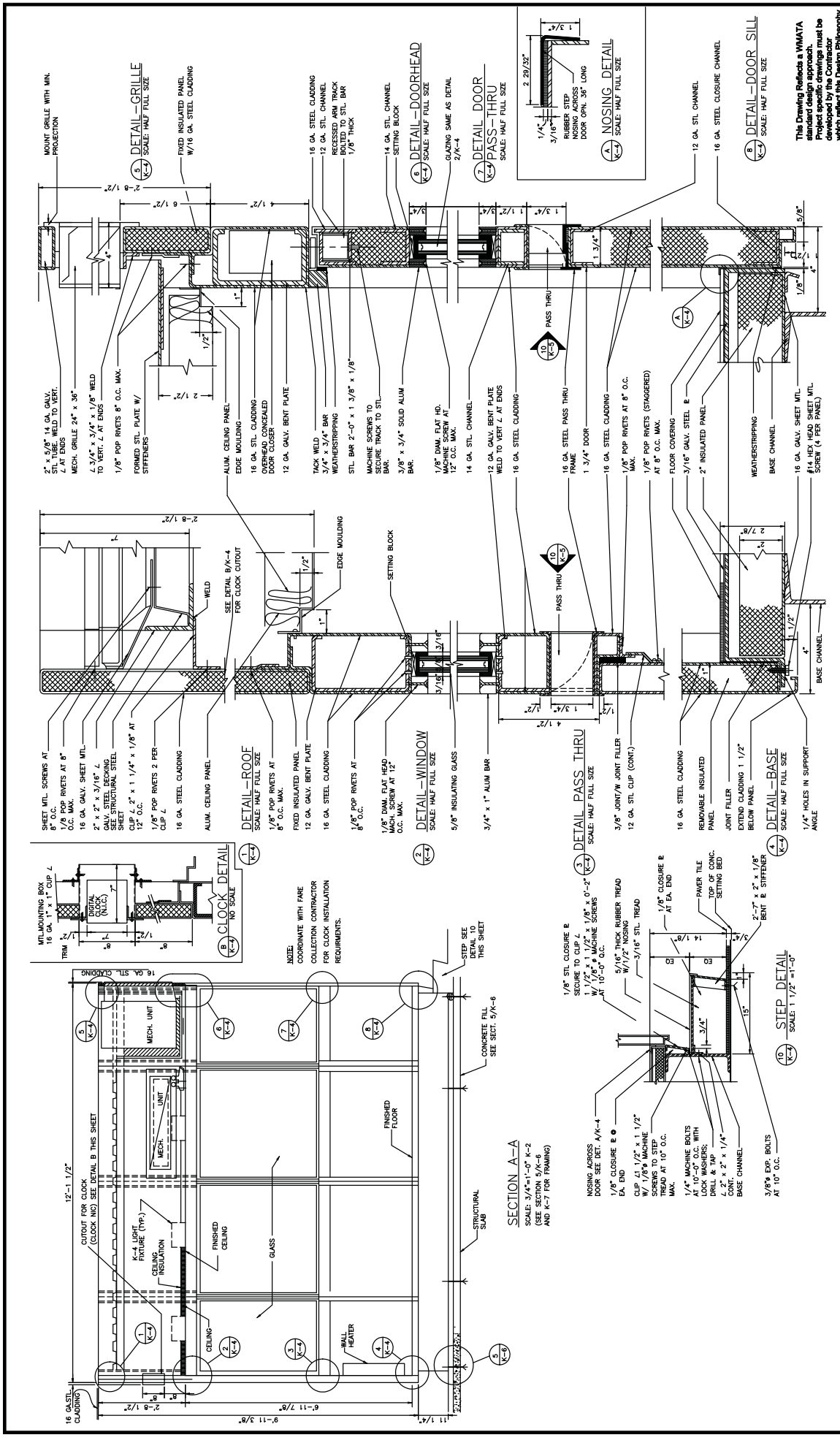
APPROVED: DATE:

UPDATED: DATE:

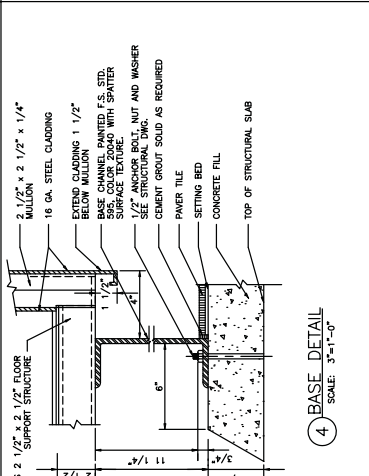
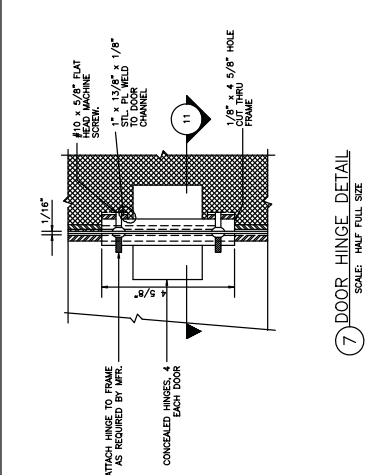
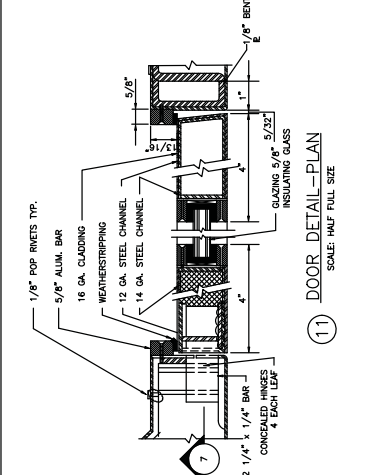
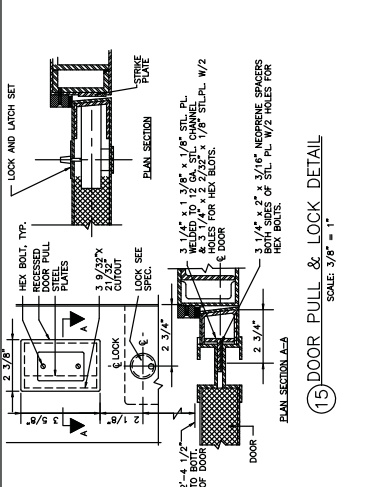
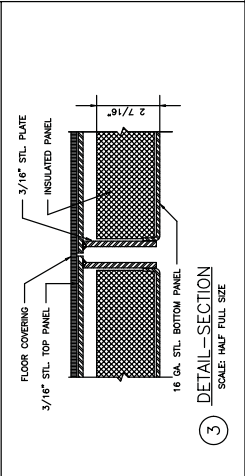
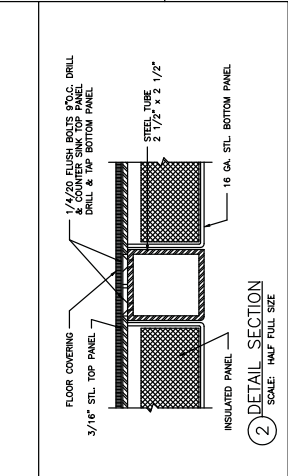
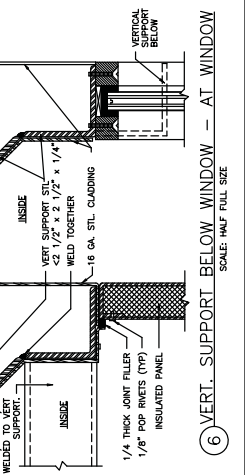
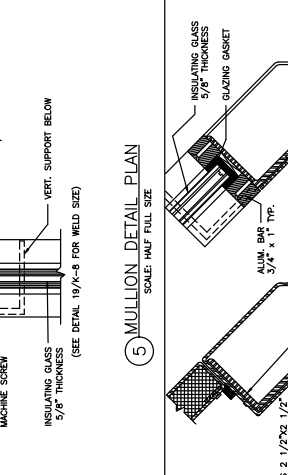
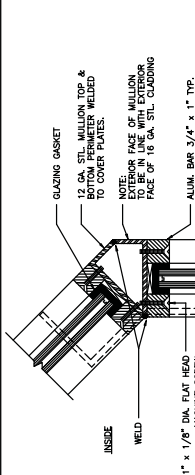
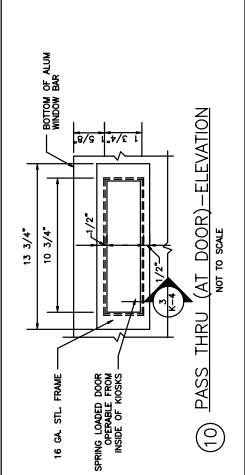
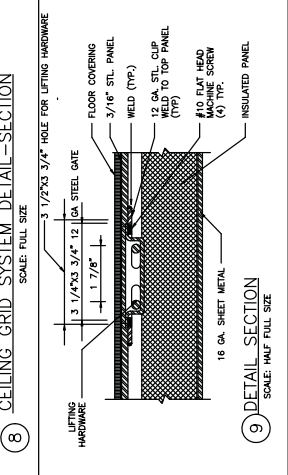
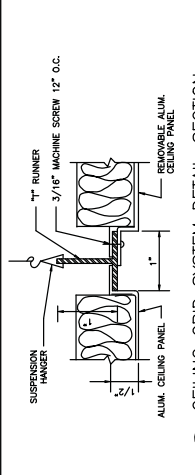
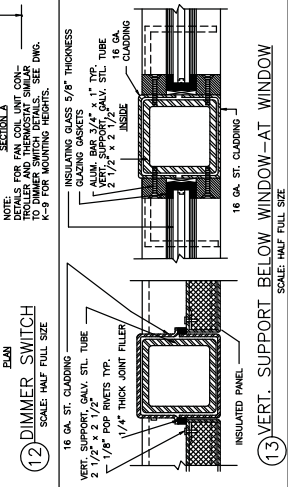
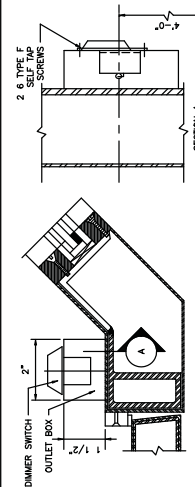
SCALE: 3/4" = 1'-0"
 OR AS SHOWN

DRAWING NO: ST-CM-K-002

PROJECT: KIOSK
 PLANS AT BASE, FLOOR, CEILING AND ROOF



KIOSK SECTIONS & DETAILS			
WASHINGTON METROPOLITAN AREA TRANSIT AUTHORITY DEPARTMENT OF TRANSIT SYSTEMS DEVELOPMENT OFFICE OF SYSTEMS		DRAWING NO. ST-CM-K-004 SCALE AS SHOWN DATE May 3, 2001	APPROVED: [Signature] DIRECTOR
DESIGNED	DATE	REVISIONS	
DRAWN	DATE	DESCRIPTION	
CHECKED	DATE	08/2001 STP	Revised and issued by the Authority
APPROVED	DATE		
UPDATED	DATE		



KIOSK DETAILS

DRAWING NO. **ST-CM-K-005**

SCALE: AS SHOWN

WASHINGTON METROPOLITAN AREA TRANSIT AUTHORITY

DEPARTMENT OF TRANSIT SYSTEM DEVELOPMENT
OFFICE OF SYSTEMS

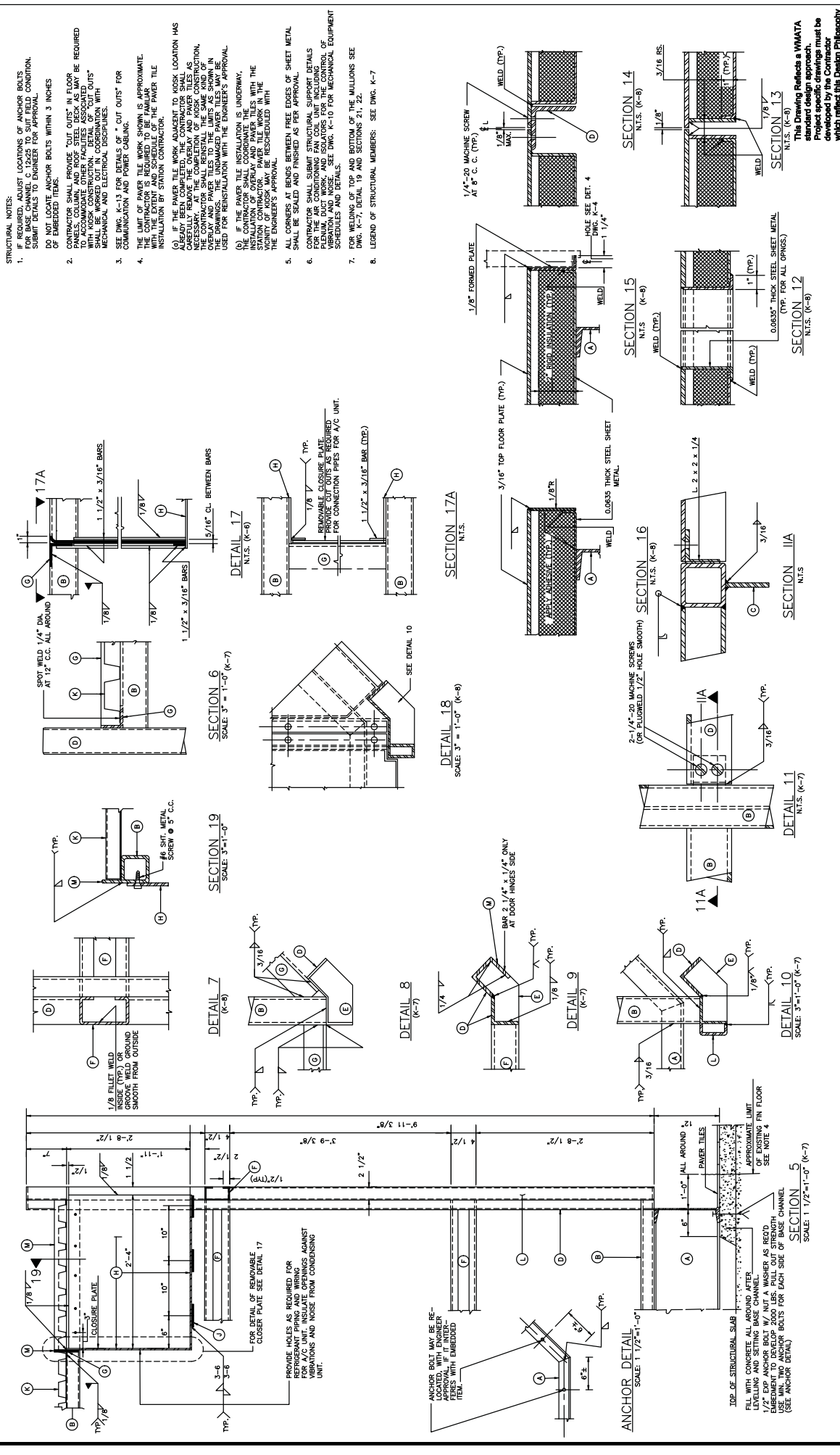
APPROVED: *[Signature]* DATE: May 3, 2001

SUBMITTED: _____ DATE: _____

REVISIONS	
DATE	DESCRIPTION
05/2001	SYSP Revised and Issued by the Authority

REFERENCE DRAWINGS	
NUMBER	DESCRIPTION

DESIGNED	DRAWN	CHECKED	APPROVED	UPDATED
DATE	DATE	DATE	DATE	DATE



STRUCTURAL NOTES:

- IF REQUIRED, ADJUST LOCATIONS OF ANCHOR BOLTS TO BE LOCATED WITHIN THE CONCRETE. SUBMIT DETAILS TO ENGINEER FOR APPROVAL.
- DO NOT LOCATE ANCHOR BOLTS WITHIN 3 INCHES OF EMBEDDED ITEMS.
- CONTRACTOR SHALL PROVIDE "CUT OUTS" IN FLOOR PANELS, COLUMN, AND ROOF STEEL BEAMS AS MAY BE REQUIRED WITH KIOSK CONSTRUCTION. DETAIL OF "CUT OUTS" SHALL BE SUBMITTED TO ENGINEER FOR MECHANICAL AND ELECTRICAL DISCIPLINES WITH COMMUNICATION AND POWER CABLING.
- SEE DWG. K-13 FOR DETAILS OF "CUT OUTS" FOR THE LIMIT OF PAPER TILE WORK SHOWN IS APPROXIMATE. THE CONTRACTOR IS REQUIRED TO BE FAMILIAR WITH THE PAPER TILE INSTALLATION BY STATION CONTRACTOR.
- IF THE PAPER TILE WORK ADJACENT TO KIOSK LOCATION HAS ALREADY BEEN COMPLETED, THE CONTRACTOR SHALL BE RESPONSIBLE FOR THE PROTECTION OF THE SAME. NECESSARY AT THE COMPLETION OF KIOSK CONSTRUCTION, THE CONTRACTOR SHALL RECALL THE SAME KIND OF MATERIALS AND METHODS USED IN THE ORIGINAL DRAWINGS. THE UNDAMAGED PAPER TILES MAY BE USED FOR RENOVATION WITH THE ENGINEER'S APPROVAL.
- IF THE PAPER TILE INSTALLATION IS UNDERWAY, THE CONTRACTOR SHALL BE RESPONSIBLE FOR THE PROTECTION OF THE PAPER TILES WITH THE ENGINEER'S APPROVAL.
- ALL CORNERS AT BENDS BETWEEN FREE EDGES OF SHEET METAL SHALL BE SEALED AND FINISHED AS PER APPROVAL.
- CONTRACTOR SHALL SUBMIT STRUCTURAL SUPPORT DETAILS FOR PLENUM, DUCT WORK, AND ISOLATORS FOR THE CONTROL OF VIBRATIONS AND NOISE. SEE DWG. K-10 FOR MECHANICAL EQUIPMENT SUPPORT AND NOISE.
- FOR WELDING OF TOP AND BOTTOM OF THE MULLIONS SEE DWG. K-7, DETAIL 19 AND SECTIONS 21, 22.
- LEGEND OF STRUCTURAL MEMBERS: SEE DWG. K-7

REVISIONS

DATE	BY	DESCRIPTION
05/20/2019	SP/DF	Revised and Issued by the Authority

REFERENCE DRAWINGS

NUMBER	DESCRIPTION
K-1	GENERAL KIOSK CONSTRUCTION
K-2	GENERAL KIOSK CONSTRUCTION & DETAILS

DESIGNED R. ROBERTS
DRAWN R. ROBERTS
CHECKED G. HACKETT
APPROVED J. MURSHAD
UPDATED

WASHINGTON METROPOLITAN AREA TRANSIT AUTHORITY
DEPARTMENT OF TRANSIT SYSTEMS DEVELOPMENT
OFFICE OF SYSTEMS

KIOSK FLOOR PLAN, SECTIONS, DETAILS AND STRUCTURAL NOTES

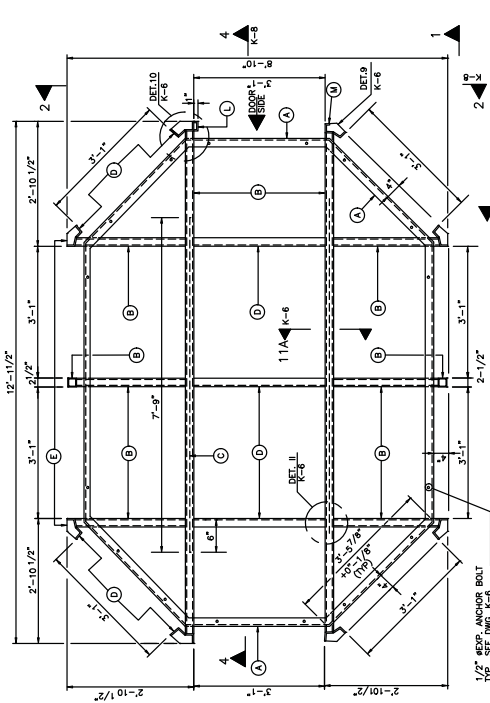
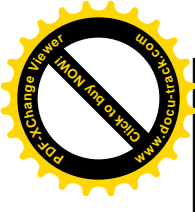
SCALE 3/4"=1'-0"
AND AS NOTED

DATE May 3, 2019
APPROVED [Signature]
DIRECTOR

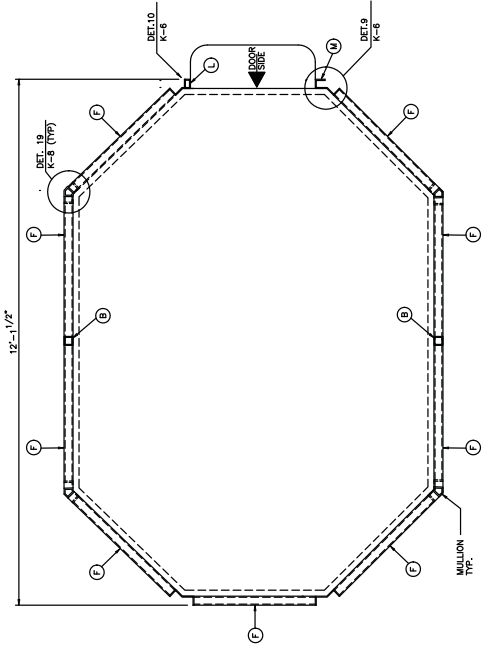
ST-CM-K-006

OB1-G-DJ AM8

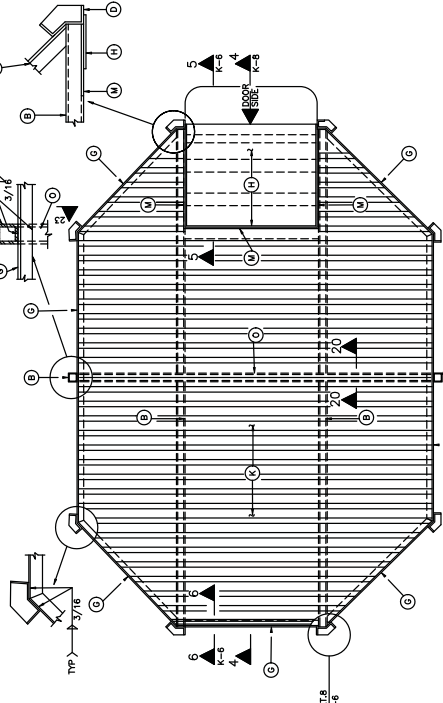
The Drawing Reflects a WMATA standard design approach. Project specific drawings must be developed by the Contractor which reflect this Design Philosophy.



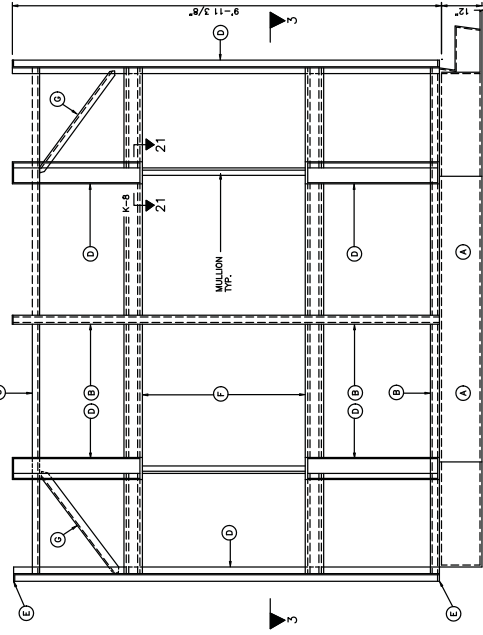
FLOOR FRAMING PLAN



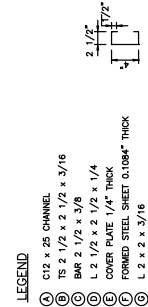
SECTION 23
N.T.S.



ROOF FRAMING PLAN



ELEVATION 1



SECTION 20
N.T.S.

- LEGEND
- (A) C12 x 25 CHANNEL
 - (B) TS 2 1/2 x 2 1/2 x 3/16
 - (C) BAR 2 1/2 x 3/8
 - (D) L 2 1/2 x 2 1/2 x 1/4
 - (E) COVER PLATE 1/4" THICK
 - (F) FORMED STEEL SHEET 0.1084" THICK
 - (G) L 2 x 2 x 3/16
 - (H) FORMED STEEL PLATE 3/16" THICK
 - (I) STIFFENER PLATE 4" x 3/16"
 - (J) 1 1/2" - 0.0398" THICK WIDE RB GALVANIZED STEEL ROOF DECK, MIN. 1 = 0.20 IN" WELD IN ACCORD WITH MFR'S RECOMMENDATIONS.
 - (K) BENT PLATE 1/8" THICK
 - (L) COVER PLATE 3/16" THICK
 - (M) BAR 2 1/4" x 1/4"
 - (N) COVER PLATE 3/16" THICK
 - (O) TS 2 1/2 x 2 1/2 x 1/4

DESIGNED	DATE	DRAWN	DATE	CHECKED	DATE	APPROVED	DATE	UPDATED	DATE

NUMBER	DATE	BY	DESCRIPTION
01	08/20/2013	DFP	Revised and issued by the Authority

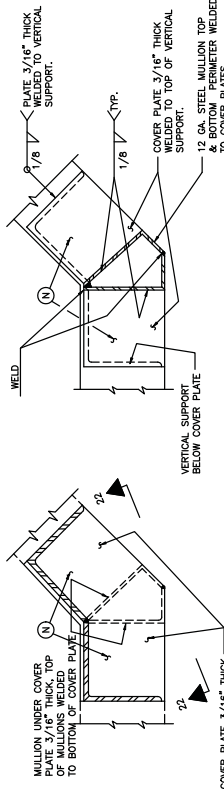
REVISIONS	DATE	BY	DESCRIPTION

WASHINGTON METROPOLITAN AREA TRANSIT AUTHORITY
 DEPARTMENT OF TRANSIT SYSTEMS DEVELOPMENT
 OFFICE OF SYSTEMS

APPROVED: *[Signature]*
 DIRECTOR
 DATE: Nov. 3, 2011
 SUBMITTED: *[Signature]*
 DATE: *[Blank]*

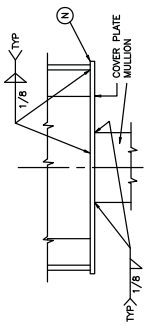
SCALE: 3/4" = 1'-0"
 DRAWING NO. ST-CM-K-007
 OBL-G-DJ AMB

KIOSK
 FLOOR AND ROOF FRAMING PLANS, ELEVATION
 AND SECTIONS.

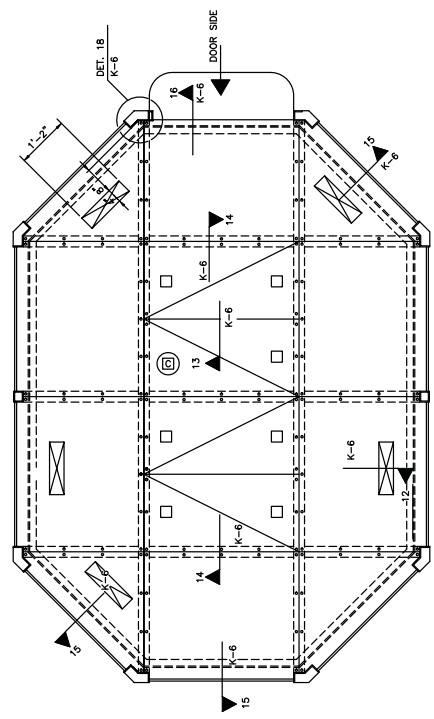


DETAILS 19
N.T.S. K-7

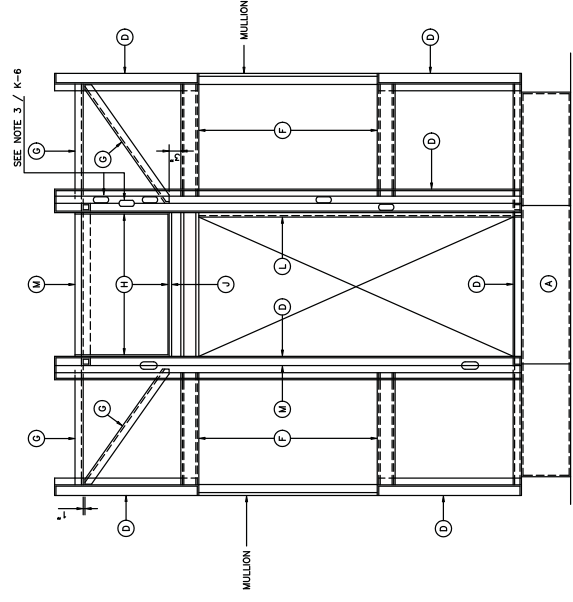
SECTION 21
N.T.S. K-7



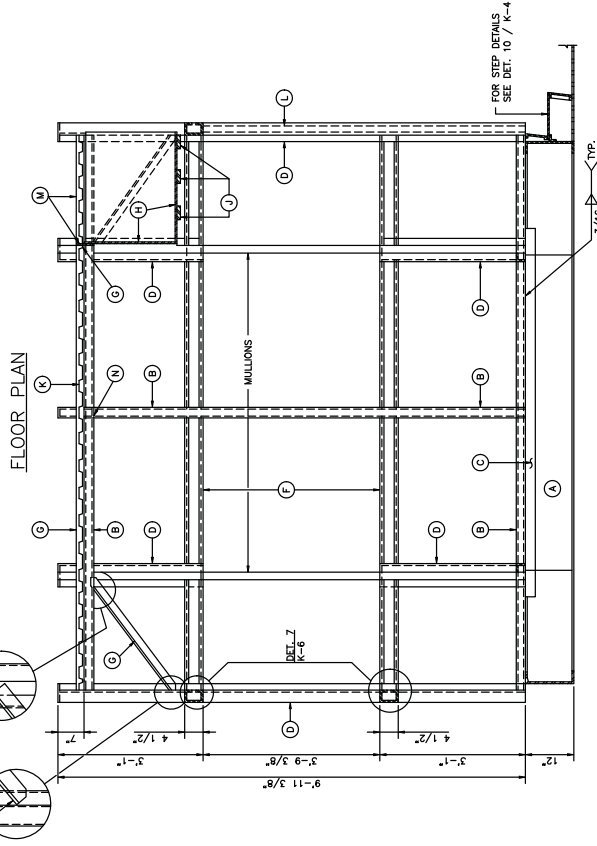
SECTION 22
N.T.S.



FLOOR PLAN
(FOR OTHER DIMENSIONS AND DETAILS, SEE (ING. K-2))



ELEVATION 2
K-7



SECTION 4
K-7

This Drawing Reflects an ILMATA standard design approach. Project specific drawings must be developed by the Contractor which reflect this Design Philosophy



WASHINGTON METROPOLITAN AREA TRANSIT AUTHORITY
DEPARTMENT OF TRANSIT SYSTEMS DEVELOPMENT
OFFICE OF SYSTEMS

APPROVED: *[Signature]* DIRECTOR
DATE: May 3, 2001

SUBMITTED: _____ DATE: _____

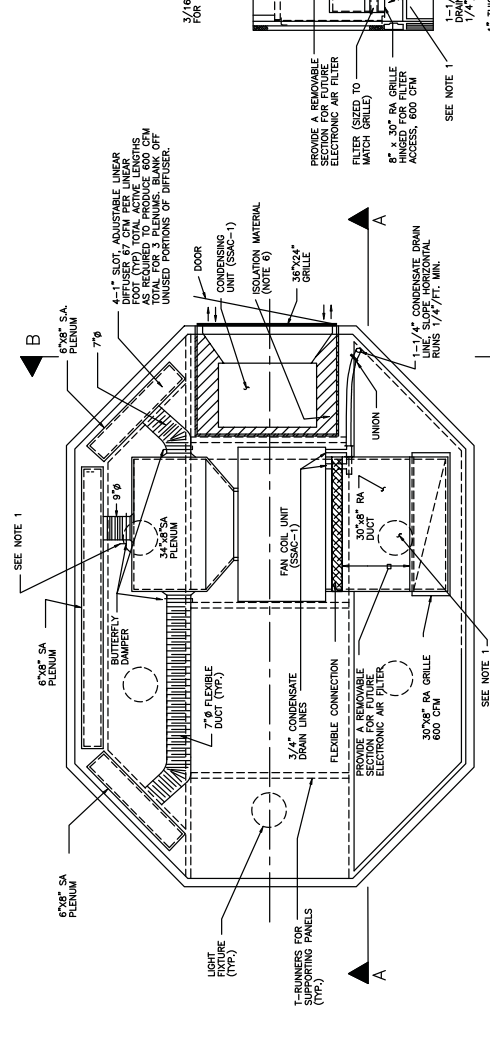
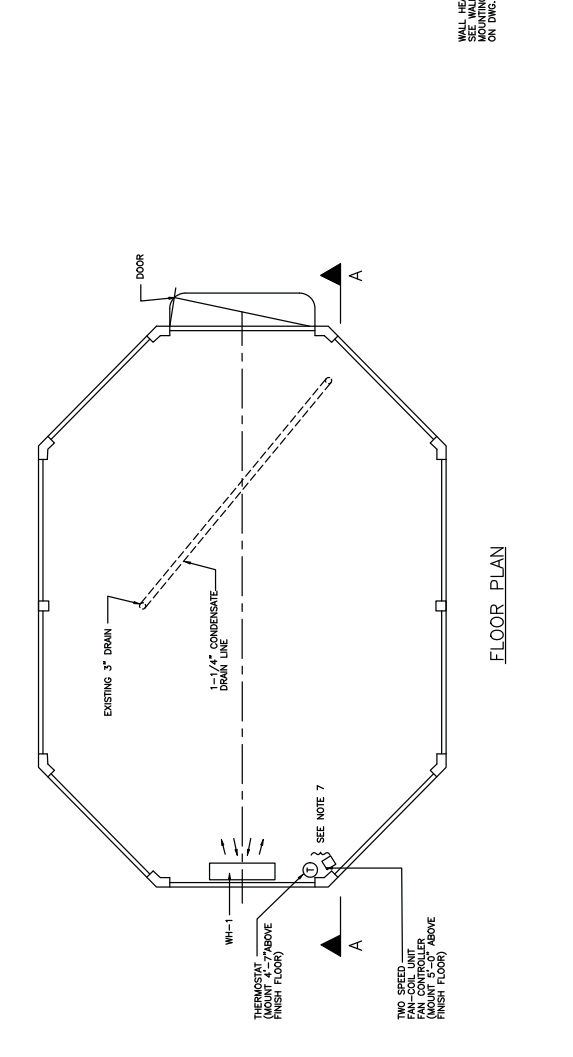
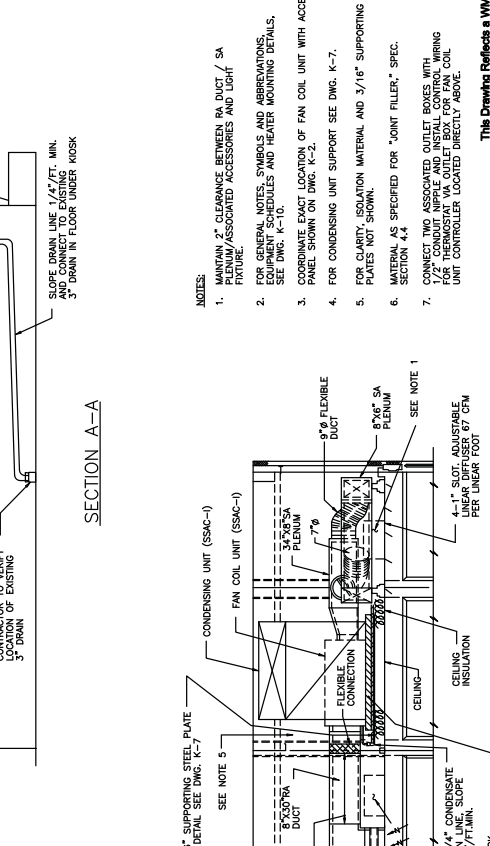
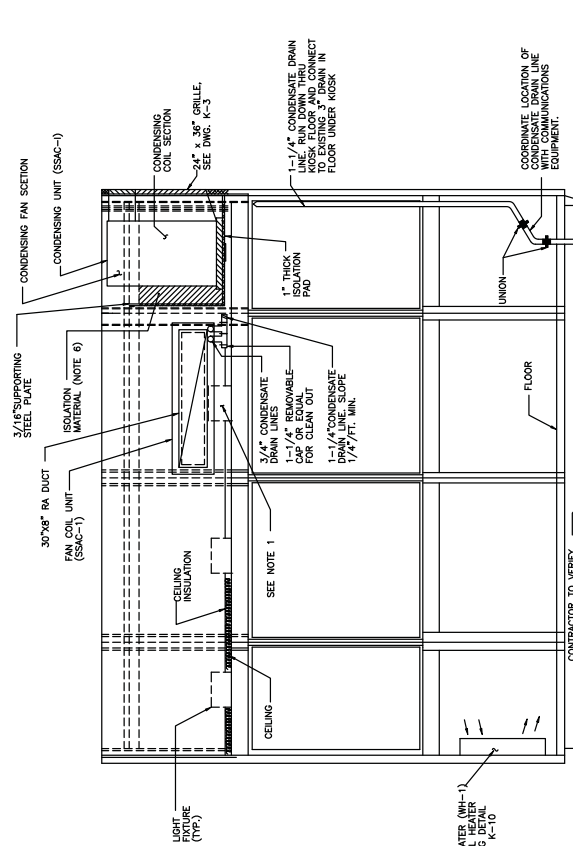
REFERENCE DRAWINGS		REVISIONS	
NUMBER	DESCRIPTION	DATE	BY
100-1000	SECTIONAL DETAILS AND SYMBOLS	05/2001	PS/DF
100-1001	GENERAL NOTES		
100-1002	LOADS, MATERIALS, & FINISHES		

KIOSK
FLOOR PLAN, ELEVATION SECTIONS AND
DETAILS

SCALE: 3/4" = 1'-0"

DRAWING NO. ST-CM-K-008

PROJECT: OBL-G-DJ AMB



- NOTES:
1. MAINTAIN 2" CLEARANCE BETWEEN RA DUCT / SA PLENUM/ASSOCIATED ACCESSORIES AND LIGHT PANEL.
 2. ON GENERAL NOTES, SYMBOLS AND ABBREVIATIONS FOR THE SSAC UNITS AND HEATER MOUNTING DETAILS, SEE DWG. K-10.
 3. COORDINATE EXACT LOCATION OF FAN COIL UNIT WITH ACCESS PANEL SHOWN ON DWG. K-2.
 4. FOR CLARITY, ISOLATION MATERIAL AND 3/16" SUPPORTING PLATES NOT SHOWN.
 5. MATERIAL AS SPECIFIED FOR "JOINT FILLER," SPEC. SECTION 4.4
 6. CONNECT TWO ASSOCIATED OUTLET BOXES WITH 1/2" CONDUIT PIPE AND INSTALL CONTROL WIRING TO THE FAN COIL UNIT AND CONDENSING UNIT. FAN COIL UNIT CONTROLLER LOCATED DIRECTLY ABOVE.

THIS DRAWING REFLECTS A WMATA STANDARD DESIGN APPROACH. ANY CHANGES TO THIS DRAWING MUST BE APPROVED BY THE CONTRACTOR WHICH REFLECT THE DESIGN PHILOSOPHY.

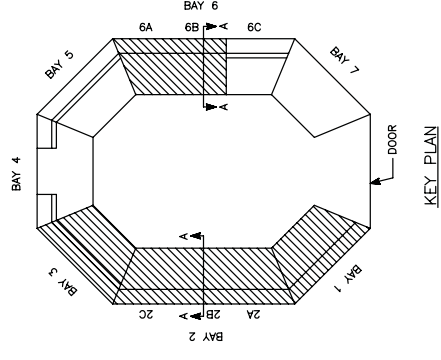
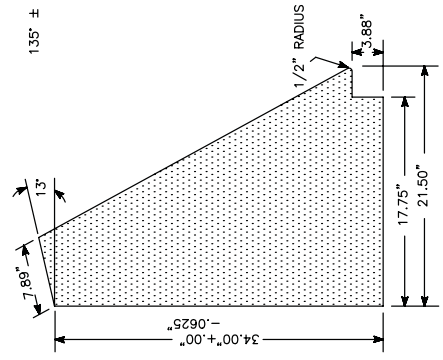
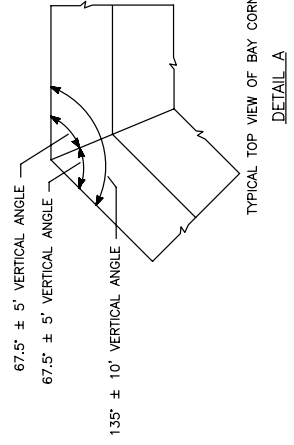
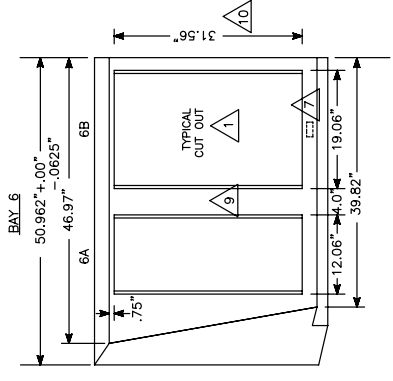
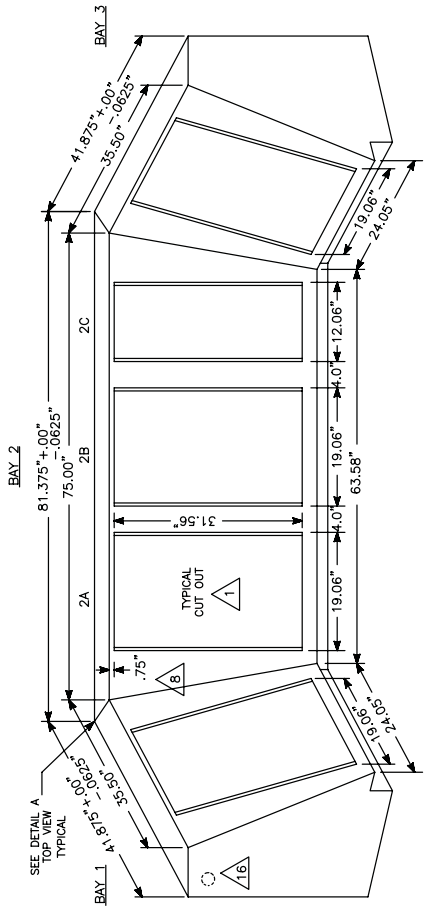
WASHINGTON METROPOLITAN AREA TRANSIT AUTHORITY
 DEPARTMENT OF TRANSIT SYSTEM DEVELOPMENT
 OFFICE OF SYSTEMS

DESIGNED: K. PAEL DATE: 05/2001
 DRAWN: M. WASSY DATE: 05/2001
 CHECKED: J. BUNANS DATE: 05/2001
 APPROVED: E. GARNER DATE: 05/2001
 UPDATED: _____ DATE: _____

APPROVED: _____ DIRECTOR DATE: _____

REVISIONS	DATE	BY	DESCRIPTION

SCALE: NONE
 DRAWING NO.: ST-CM-K-009
 OBL-G-DJ AMB



- NOTES:
1. EQUIPMENT CUT-OUT WITH RECESSED PANEL MOUNTING RAILS SHALL BE DIMENSIONED, DRILLED AND TAPPED IN ACCORDANCE WITH EIA STANDARD RS-310-C.
 2. BAYS 1, 2A, 2B, 2C AND 3, AND BAY 6A AND 6B SHALL BE ONE PIECE SECTIONS.
 3. UNLESS SPECIFIED, STANDARD LINEAR TOLERANCE SHALL BE ±0.03 INCHES.
 4. UNLESS SPECIFIED, STANDARD ANGLE TOLERANCE SHALL BE ±30°.
 5. CONTRACTOR SHALL DESIGN APPROPRIATE INNER SUPPORT STRUCTURE OF CABINETS.
 6. ALL SURFACE OF STRUCTURES SHALL BE TREATED AFTER WELDING WITH DUPONT CHROMOTIZED PRIME EU-9007 OR APPROVED EQUAL.
 7. CONTRACTOR SHALL DETERMINE CUT-OUT DIMENSIONS FOR TEST EQUIPMENT DUPLEX RECEPTACLE.
 8. CONTRACTOR SHALL DESIGN CABLE PASSAGEWAY BETWEEN BAY 1 AND BAY 3.
 9. CONTRACTOR SHALL DESIGN CABLE PASSAGEWAY BETWEEN BAY 6A AND BAY 6B.
 10. CONTRACTOR SHALL DESIGN CABLE PASSAGEWAY BETWEEN BAY 6B AND BAY 6C.
 11. SPACE RESERVED FOR THE ELEVATOR PANEL AND CCTV KIOSK CONTROL PANEL SHALL BE 7.0 INCHES IN HEIGHT (4 RACK UNITS).
 12. THE CONTRACTOR SHALL ADJUST THE DIMENSIONS SHOWN WITH THE ACTUAL KIOSK FABRICATION DETAILS.
 13. BLANK PANELS INDICATED SHALL BE FURNISHED AND INSTALLED BY THE CONTRACTOR.
 14. BLANK PANELS SHALL BE BRUSHED ALUMINUM THICKNESS SHALL BE 1/8 INCH.
 15. THE KIOSK CABLE TERMINATION RACK SHALL BE LOCATED BEHIND THE BLANK PANEL OF BAY 6B.
 16. THE CONTRACTOR SHALL DETERMINE CUT-OUT DIMENSIONS AND LOCATION FOR CABLE PASSAGEWAY TO INTERPHONE SPEAKER IN THE KIOSK DOOR.

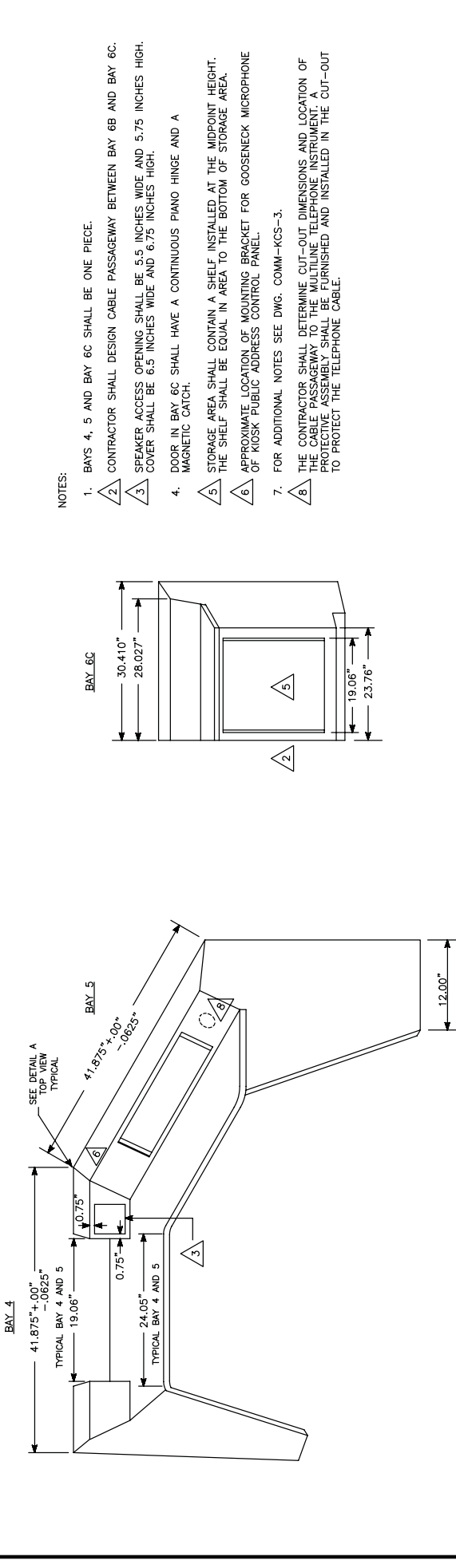
This Drawing Reflects a WMATA standard design approach. Project specific drawings must be developed by the Contractor which reflect the Design Philosophy

CROSS SECTION A-A
TYPICAL BAY 1, BAY 2A, 2B, 2C,
BAY 3, BAY 6A AND 6B

DESIGNED		DATE		REVISIONS	
DRAWN	DATE	DATE	DESCRIPTION	DATE	BY
CHECKED	DATE	08/2001	STSP	08/2001	STSP
APPROVED	DATE				
UPDATED	DATE				

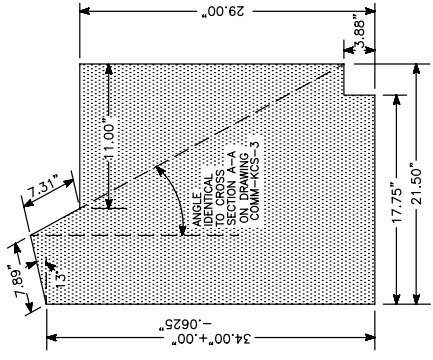
SUBMITTED		DATE		APPROVED	
DATE		DATE		DIRECTOR	
				Approved: R. S. Smith Director	

WASHINGTON METROPOLITAN AREA TRANSIT AUTHORITY		KIOSK CABINET DIMENSIONS	
DEPARTMENT OF TRANSIT SYSTEM DEVELOPMENT		SC#616E	
OFFICE OF SYSTEMS		Project: CMM-KCS-003	
		MXXXXX-XXXX	

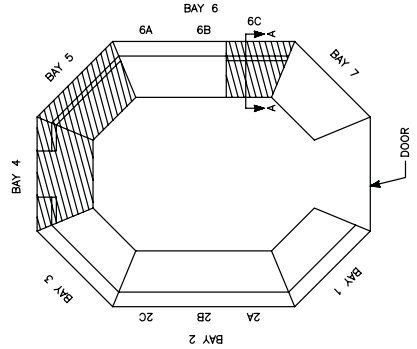


NOTES:

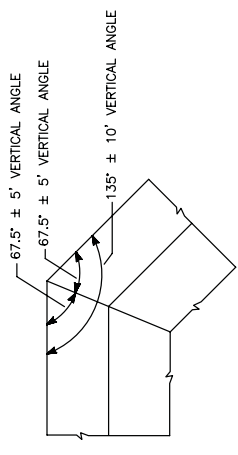
1. BAYS 4, 5 AND BAY 6C SHALL BE ONE PIECE.
2. CONTRACTOR SHALL DESIGN CABLE PASSAGEWAY BETWEEN BAY 6B AND BAY 6C.
3. SPEAKER ACCESS OPENING SHALL BE 5.5 INCHES WIDE AND 5.75 INCHES HIGH. COVER SHALL BE 6.5 INCHES WIDE AND 6.75 INCHES HIGH.
4. DOOR IN BAY 6C SHALL HAVE A CONTINUOUS PIANO HINGE AND A MAGNETIC CATCH.
5. STORAGE AREA SHALL CONTAIN A SHELF INSTALLED AT THE MIDPOINT HEIGHT. THE SHELF SHALL BE EQUAL IN AREA TO THE BOTTOM OF STORAGE AREA.
6. APPROXIMATE LOCATION OF MOUNTING BRACKET FOR GOOSENECK MICROPHONE OF KIOSK PUBLIC ADDRESS CONTROL PANEL.
7. FOR ADDITIONAL NOTES SEE DWG. COMM-KCS-3.
8. THE CONTRACTOR SHALL DETERMINE CUT-OUT DIMENSIONS AND LOCATION OF THE CABLE PASSAGEWAY TO THE MULTILINE TELEPHONE INSTRUMENT. A PROTECTIVE ASSEMBLY SHALL BE FURNISHED AND INSTALLED IN THE CUT-OUT TO PROTECT THE TELEPHONE CABLE.



CROSS SECTION A-A
(BAY 6C)



KEY PLAN



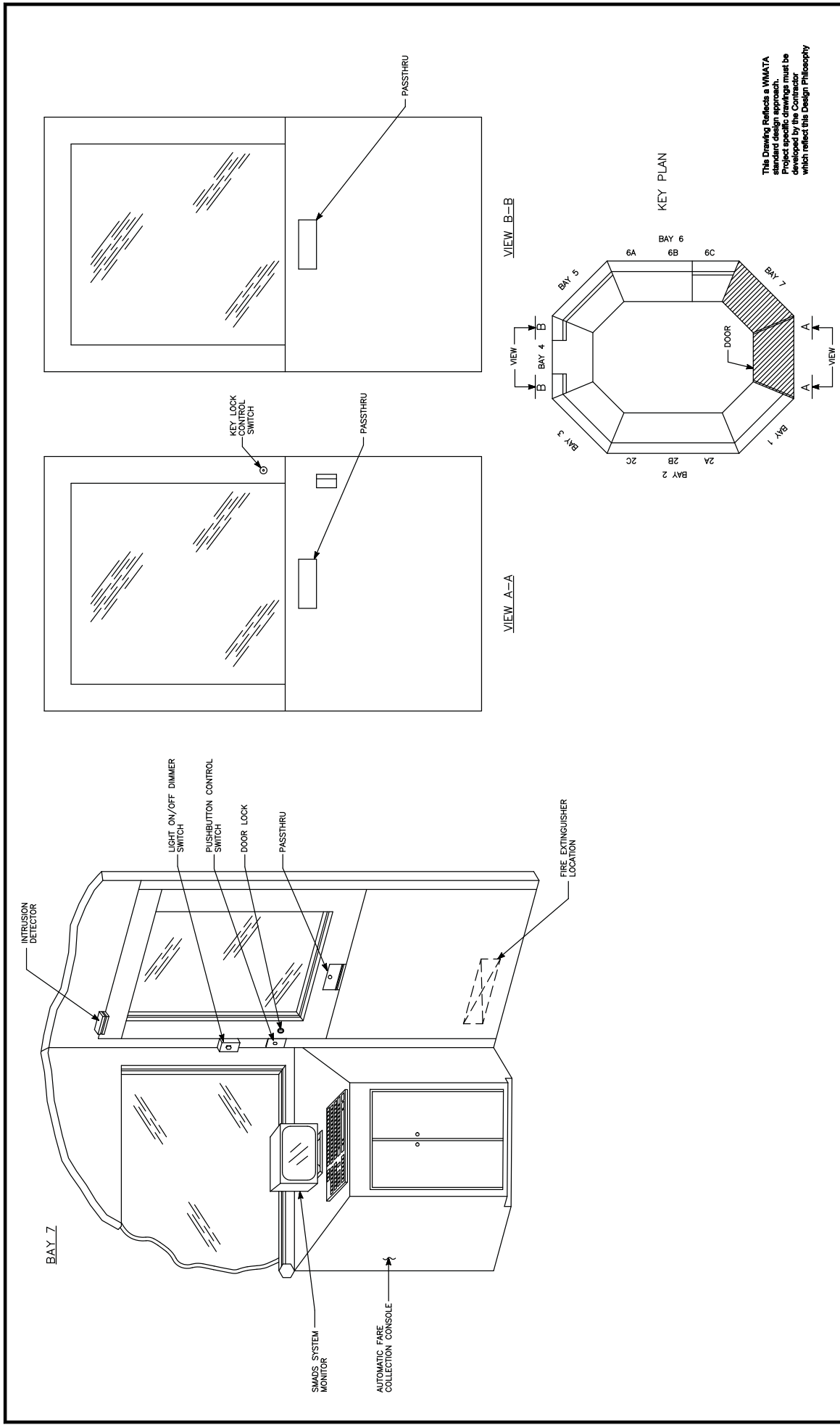
TYPICAL TOP VIEW OF BAY CORNERS
DETAIL A

This Drawing Reflects a WAMATA standard design approach. Project specific drawings must be developed by the Contractor which reflect the Design Philosophy

DESIGNED		DRAWN		CHECKED		APPROVED		UPDATED	
DATE	BY	DATE	BY	DATE	BY	DATE	BY	DATE	BY
6-00		6-00							

REFERENCE DRAWINGS		REVISIONS	
NUMBER	DESCRIPTION	DATE	BY
		08/2001	STSP
		Revised and Issued by the Authority	

WASHINGTON METROPOLITAN AREA TRANSIT AUTHORITY		DRAWING NO. ST-CM-KCS-004	
DEPARTMENT OF TRANSIT SYSTEMS DEVELOPMENT		SCALE NONE	
OFFICE OF SYSTEMS		DATE May 3, 2001	
SUBMITTED		APPROVED <i>[Signature]</i> DIRECTOR	
		DATE	



The Drawing Reflects a WIMATA standard design approach. Project specific drawings must be developed by the Contractor which reflect this Design Philosophy

WASHINGTON METROPOLITAN AREA TRANSIT AUTHORITY
 DEPARTMENT OF TRANSIT SYSTEM DEVELOPMENT
 OFFICE OF SYSTEMS

APPROVED: *[Signature]* DIRECTOR
 DATE: May 3, 2001

SCALE: NONE
 DRAWING NO.: SI-CM-KCS-005

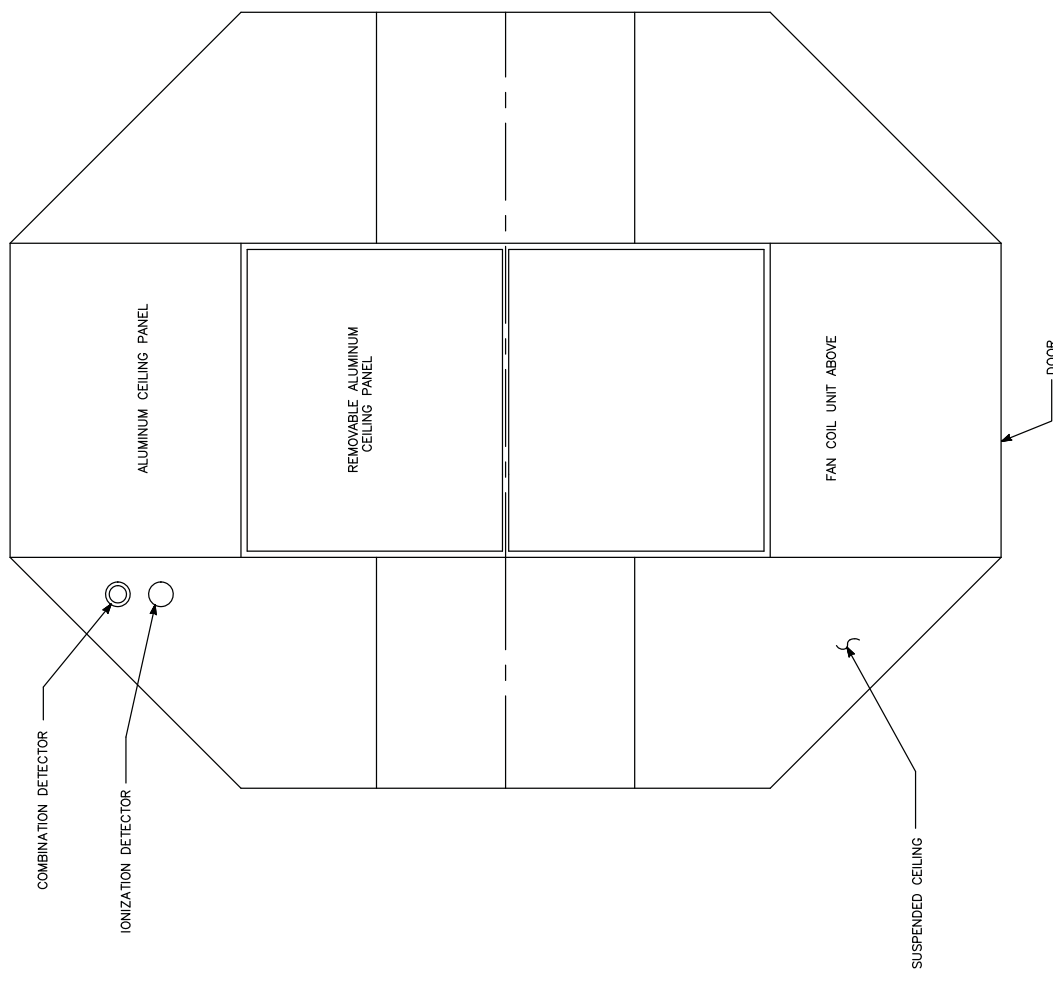
DESIGNED		DRAWN		CHECKED		APPROVED		UPDATED	
DATE	BY	DATE	BY	DATE	BY	DATE	BY	DATE	BY
08/2001	STSP								

REVISIONS	DATE	BY	DESCRIPTION
1	08/2001	STSP	Revised and Issued by the Authority

REFERENCE DRAWINGS	NUMBER	DESCRIPTION



NOTES:
 1. BOTH THE IONIZATION AND COMBINATION DETECTOR ARE LOCATED ABOVE THE CEILING.



REFLECTED CEILING PLAN

The Drawing Reflects a YAMATA Standard Design Approach. The Standard Design Approach must be developed by the Contractor which reflect this Design Philosophy

WASHINGTON METROPOLITAN AREA TRANSIT AUTHORITY
 DEPARTMENT OF TRANSIT SYSTEM DEVELOPMENT
 OFFICE OF SYSTEMS

APPROVED: *[Signature]* DIRECTOR
 DATE: May 3, 2001

SUBMITTED: _____ DATE: _____

SCALE: NONE

DRAWING NO. ST-CM-KCS-006

CEILING PLAN

MXXXX-XXX
 04/2001

DESIGNED	DRAWN	CHECKED	APPROVED	DATE	DATE	DATE	DATE	DATE

REFERENCE DRAWINGS	NUMBER	DATE	BY	REVISIONS